



THREE - BEARS GREEN

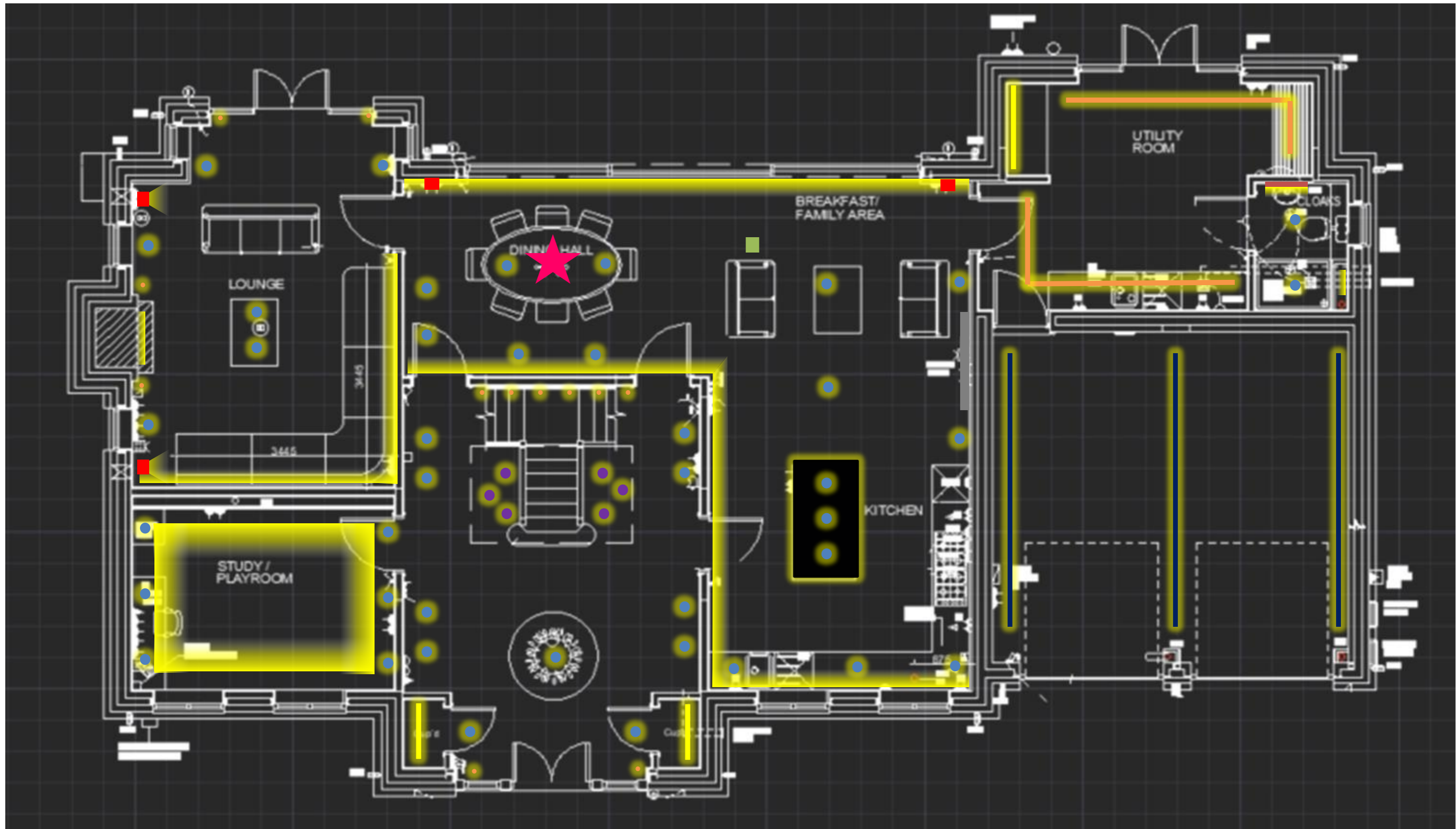
PR2241-1

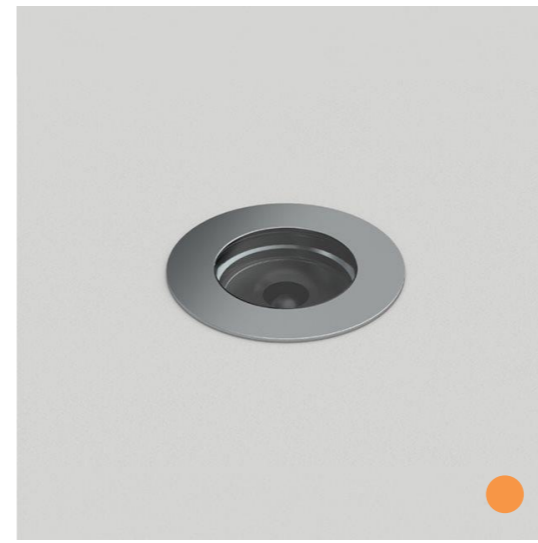
GROUND FLOOR

LIGHTING LAYOUT
KEY TO LIGHTING PLAN
KITCHEN, DINING AND FAMILY
SNUG/ STUDY & LOUNGE
GARAGE, UTILITY & WC

FIRST FLOOR

LIGHTING LAYOUT
KEY TO LIGHTING PLAN
ENTRANCE HALL, STAIRS & LANDING
MASTER SUITE
BEDROOM TWO & EN-SUITE
BEDROOM THREE, FOUR & FIVE
DETAILS





Floor lamp- Style TBC



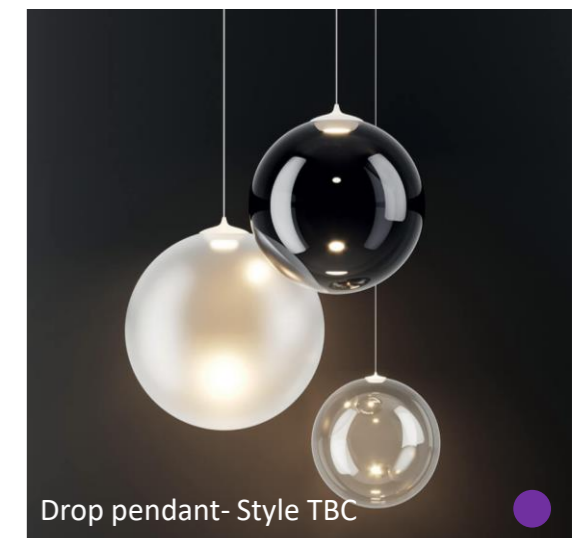
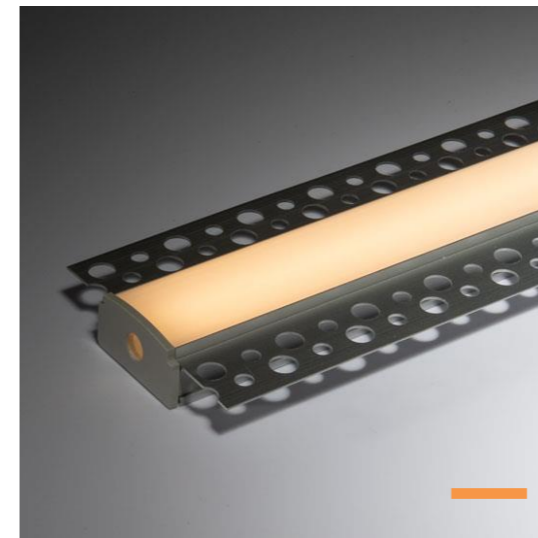
Pendant - Style TBC



Wall light- Style TBC



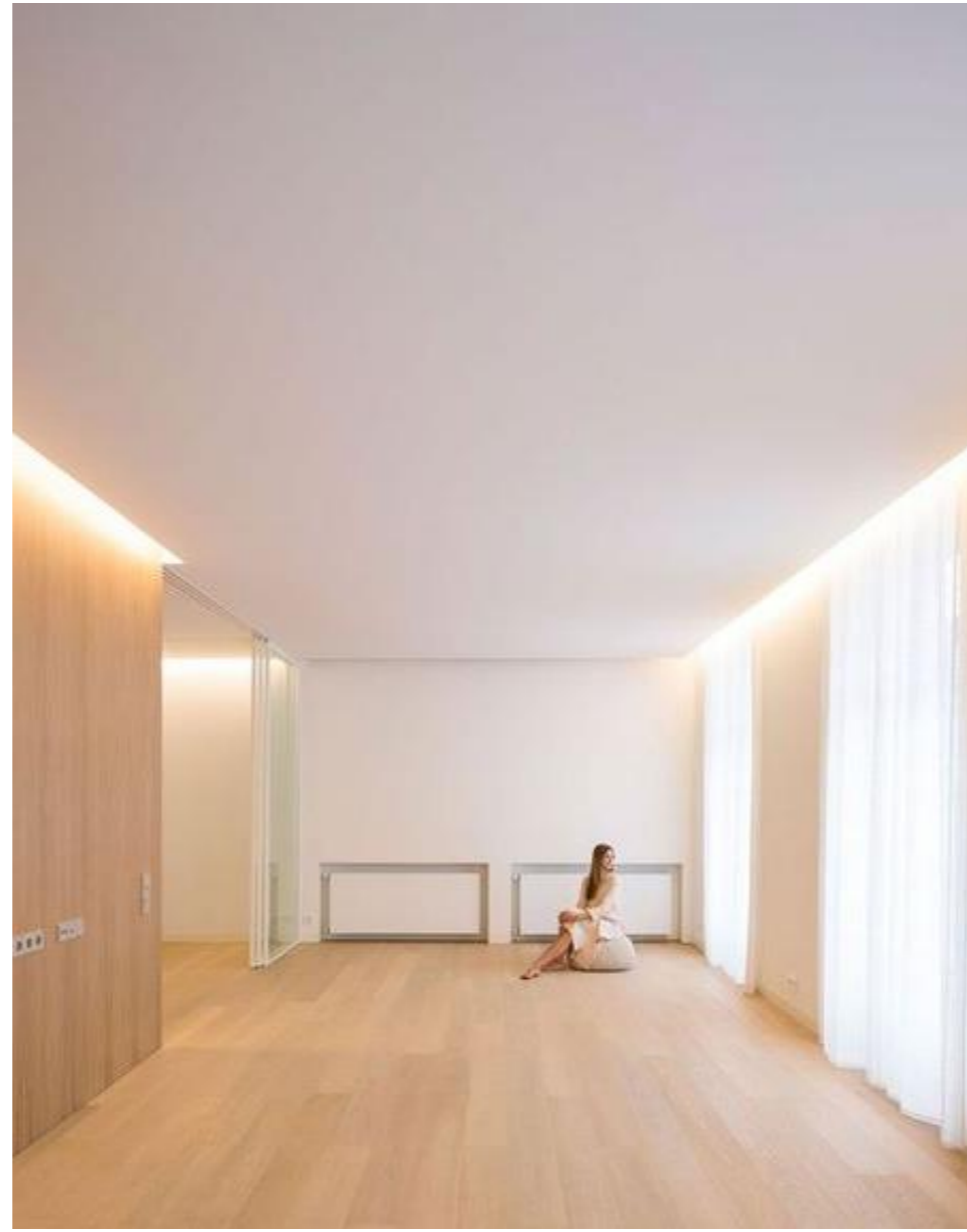
Bathroom wall light- Style TBC



Drop pendant- Style TBC



TASK LIGHTING

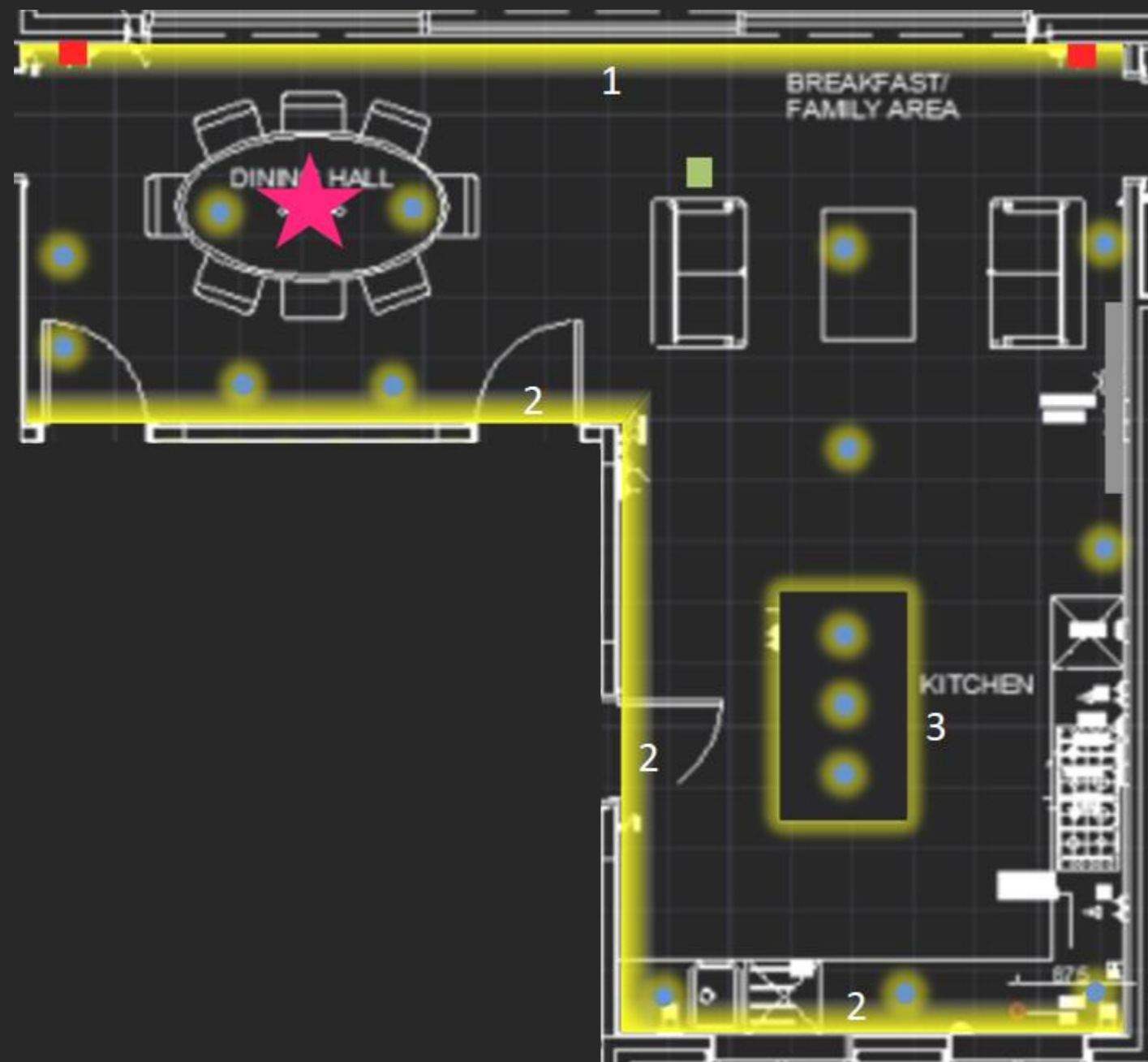


AMBIENT LIGHTING



FEATURE LIGHTING





KITCHEN, DINING AND FAMILY AREA

The main illumination for the open plan Kitchen, Dining and Family Area, comes from a continuous linear LED concealed within a shadow gap (detail 2).

This is teamed with a similar light source grazing the window dressings (detail 1). Downlights along the sides of the room provide task lighting for the worktops and will highlight the artwork. We could also add downlights over the table, if additional light is required to that provided by the feature pendant.

Low level linear LED under the island will form part of the night scene and decorative wall lights frame the windows, with a floor socket to be added for a table or floor lamp by the seating area.

We have assumed that the extractor fan will have integrated lighting for the hob but can add a task light here if required.



THREE - BEARS GREEN

KITCHEN, DINING AND FAMILY AREA
LIGHTING LAYOUT

POTTERS

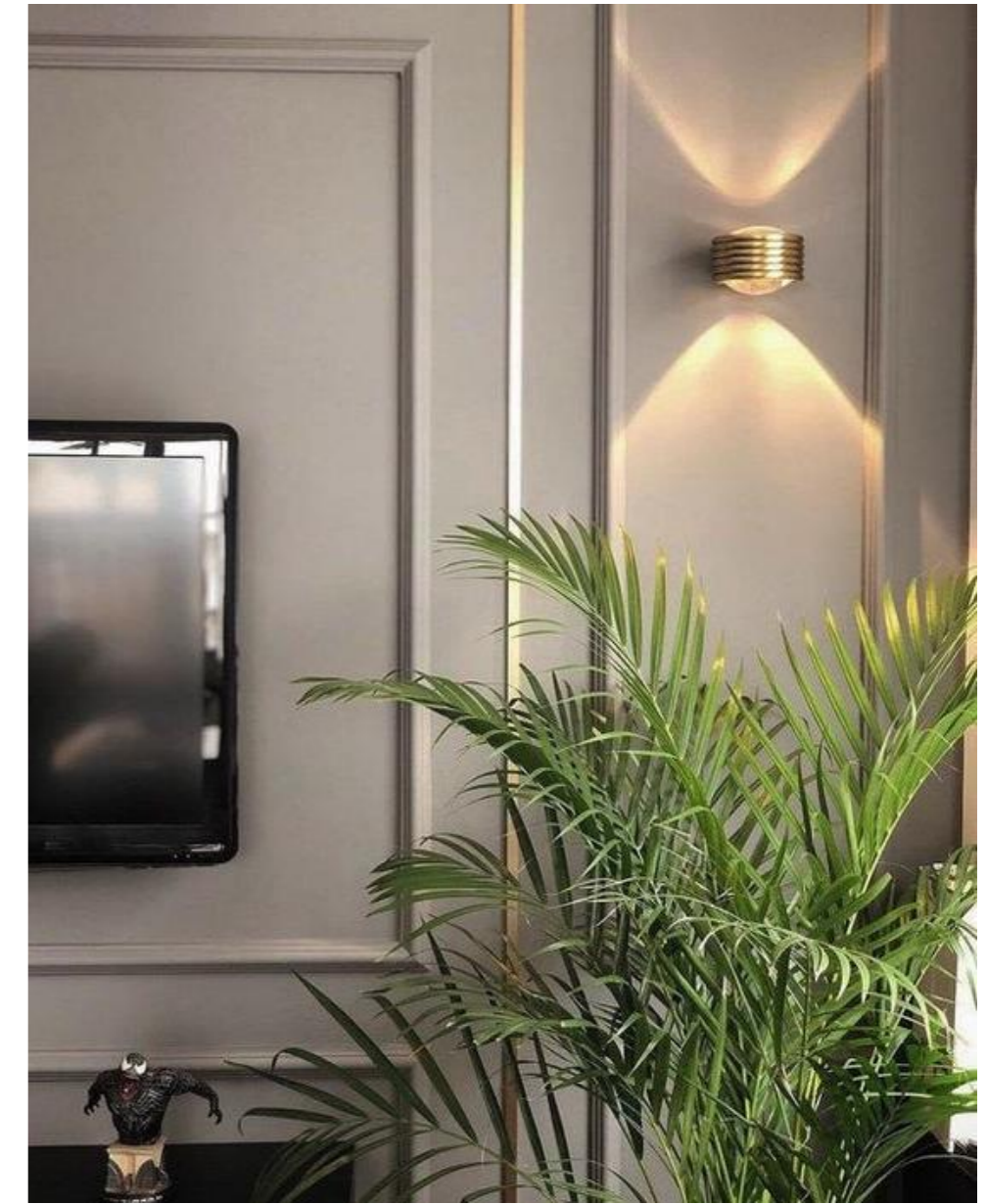
HOME
digital



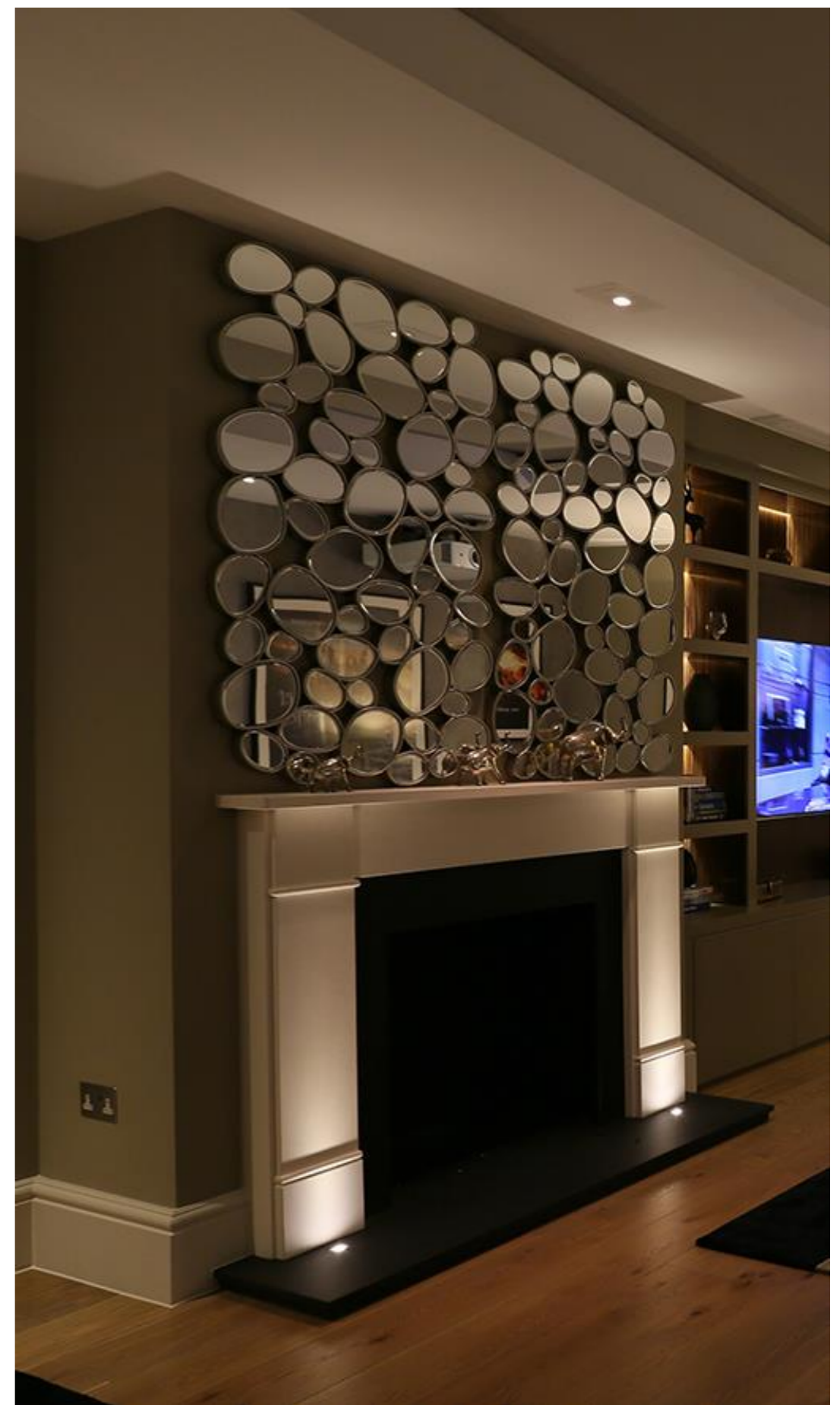
TASK LIGHTING



AMBIENT LIGHTING



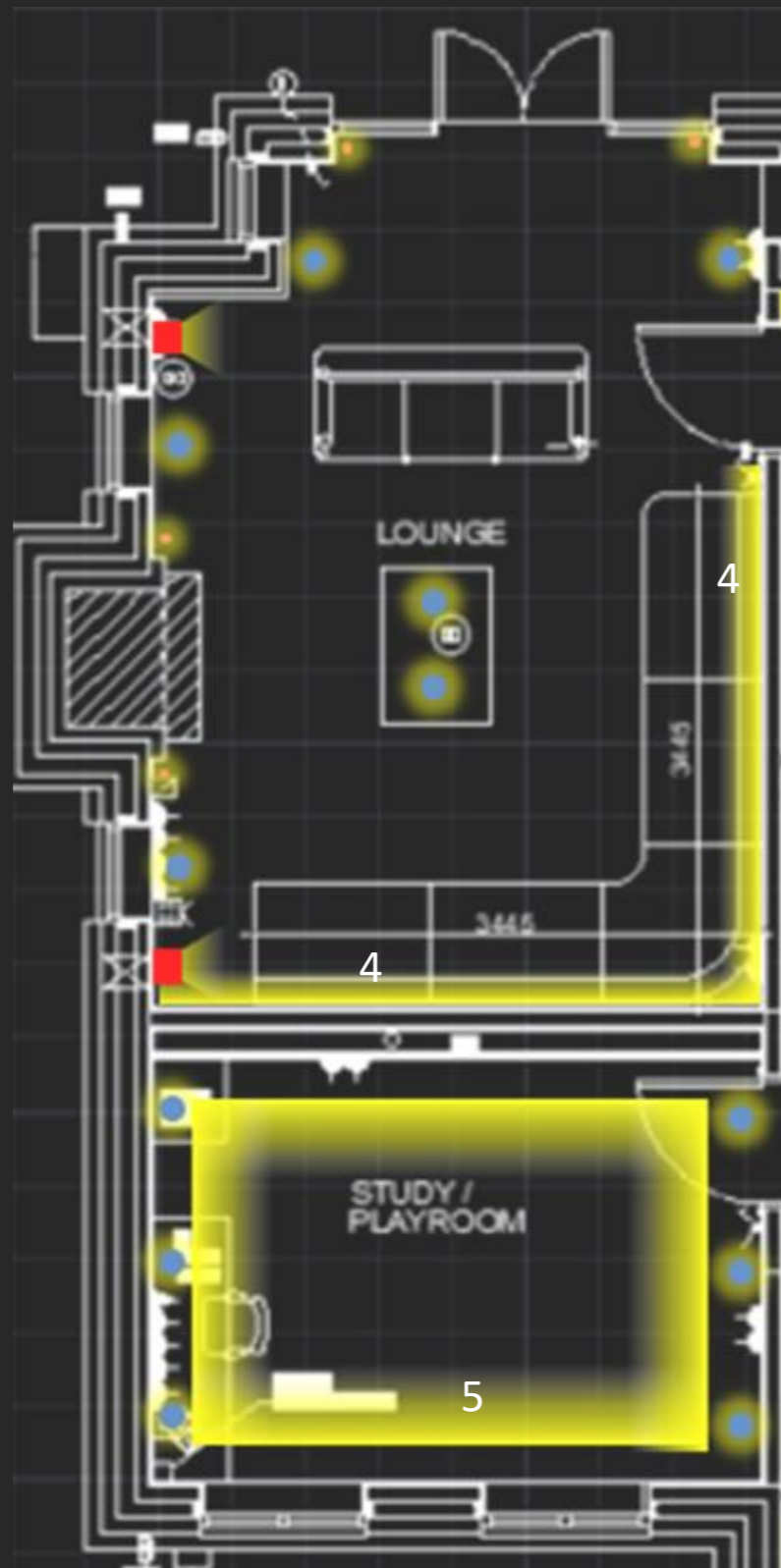
FEATURE LIGHTING



THREE - BEARS GREEN

SNUG/ STUDY & LOUNGE
REFERENCE IMAGES

POTTERS
HOME
digital



SNUG / STUDY & LOUNGE

Lighting for the Snug / Study, with its large central coffer feature, has been designed in such a way that the layout and use of the room can easily be changed (Detail 5). The coffer will use “dim-to-warm” LEDs so that the room will feel light and bright when it is running at full level, but warm and cosy when it is dimmed. Downlights have again been used for task lighting to the edges of the room and will light the desk along with any art on the walls.

In the Living Room we have added a uplit picture rail (Detail 4) behind the sofas, to brighten the ceiling with dim-to-warm LEDs - again to create both bright and cosy atmospheres, as desired. Wall lights provide the bulk of the feature lighting on the fireplace wall, with in-ground uplights to highlight the fireplace itself. Further in-ground uplights will frame the door reveal and will form a part of the evening lighting scene. A pair of downlights in the centre of the room provide the task lighting for this space.



THREE - BEARS GREEN

SNUG/ STUDY & LOUNGE
LIGHTING LAYOUT

POTTERS

HOME
digital



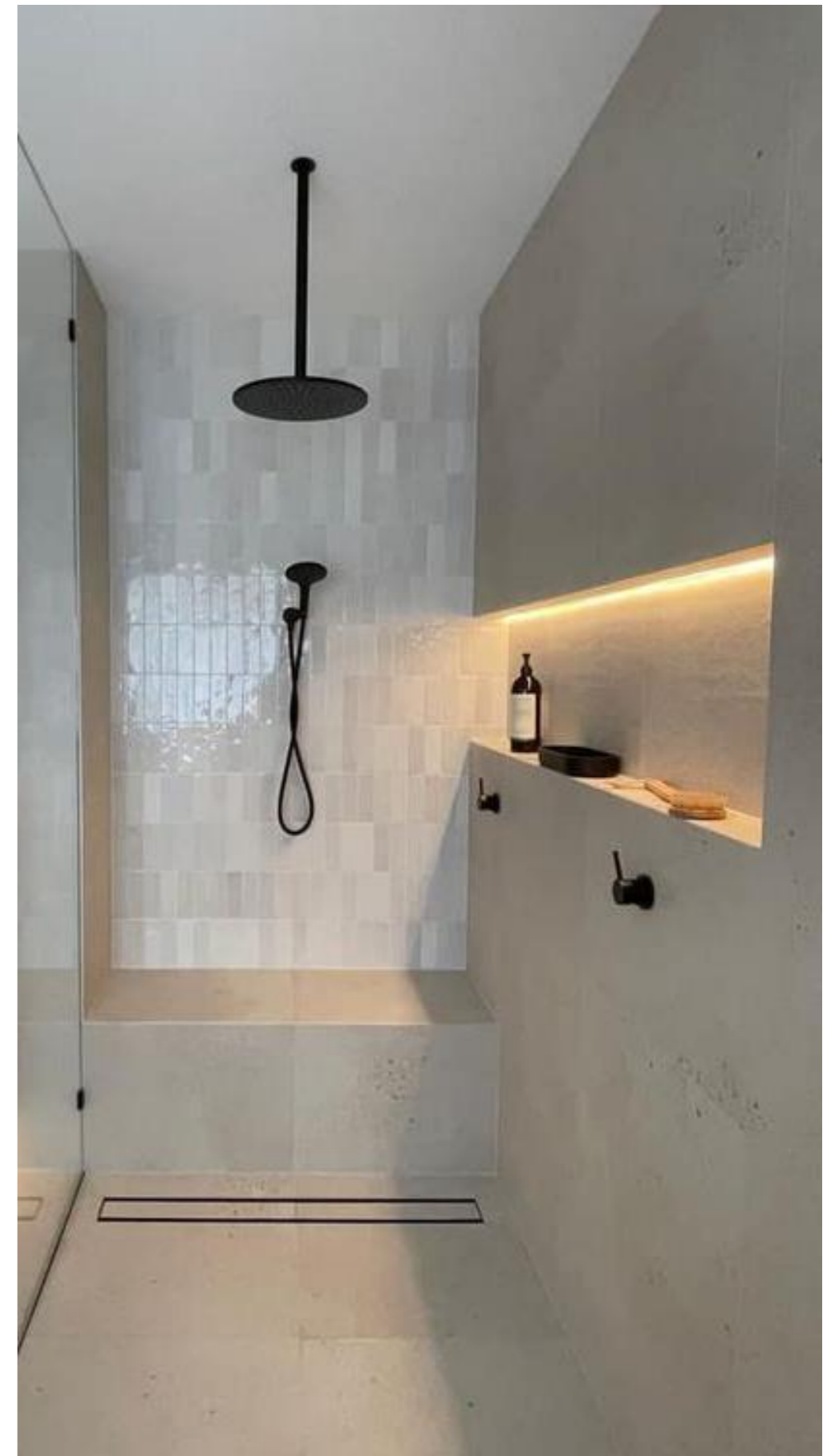
TASK LIGHTING

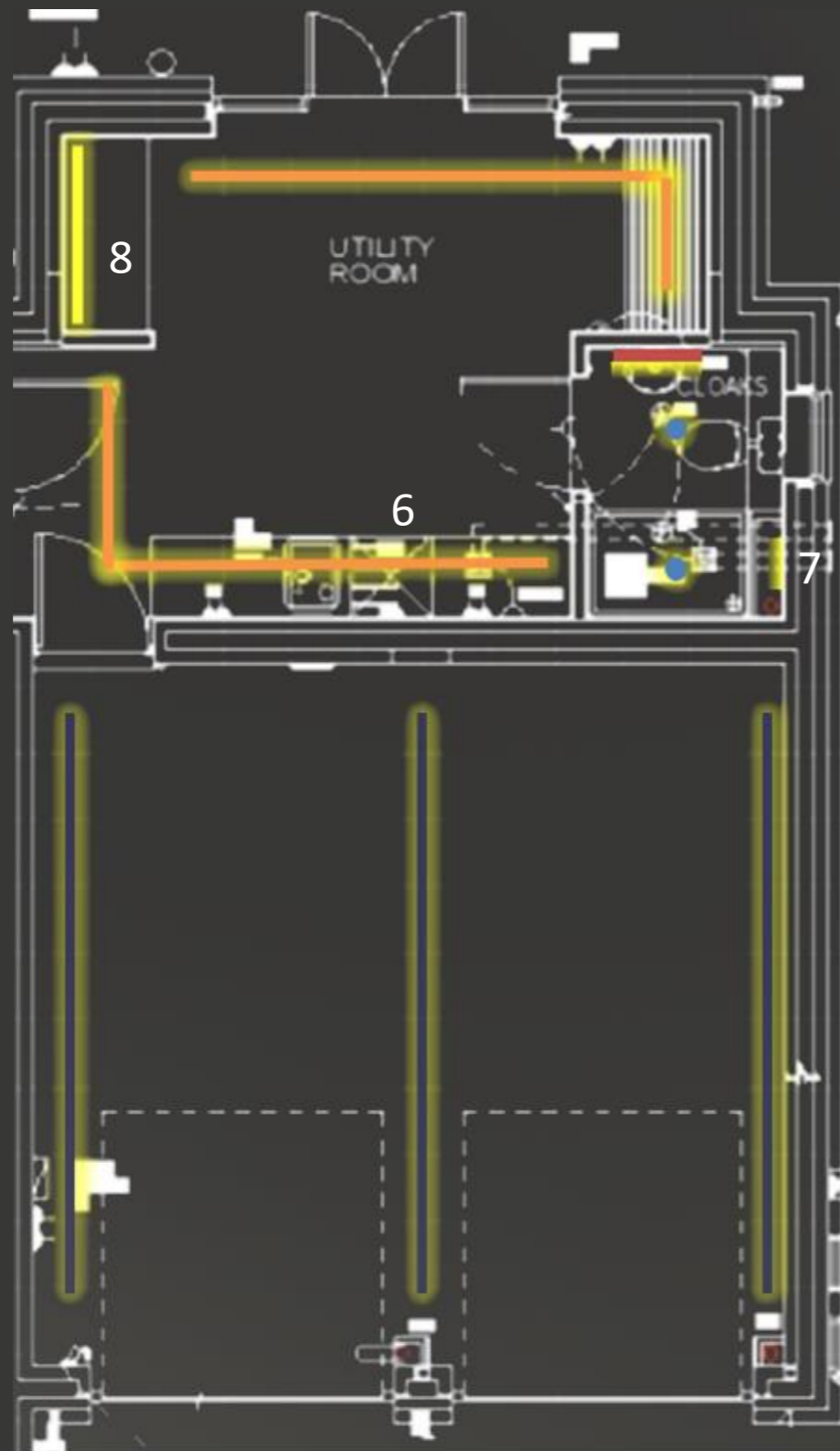


AMBIENT LIGHTING



FEATURE LIGHTING





GARAGE, UTILITY & WC

The Utility Room lighting features two L-shaped, trimless linear LED sources in the ceiling (Detail 6). These give a clean finish to the ceiling and provide plenty of task lighting for the work surfaces. A further linear LED is located within the store cupboard (Detail 8) and activated by a door switch.

For the Bathroom, we suggest a pair of downlights for general lighting, wall lights to frame the mirror and a small niche (Detail 7) within the shower.

The Garage has three long lengths of surface mounted LED profile, to provide bright, functional illumination all round.





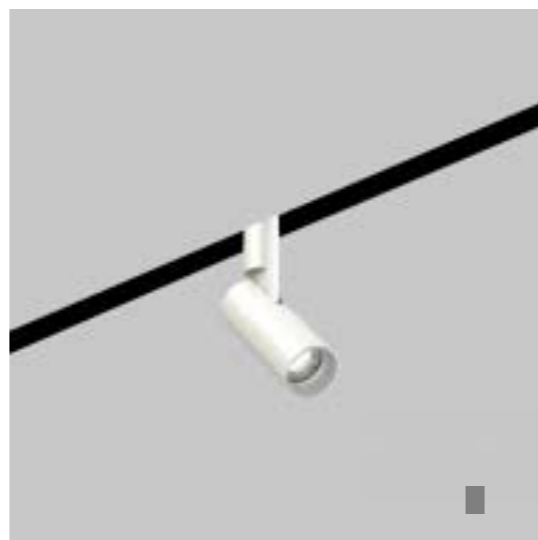
Vanity wall light- Style TBC



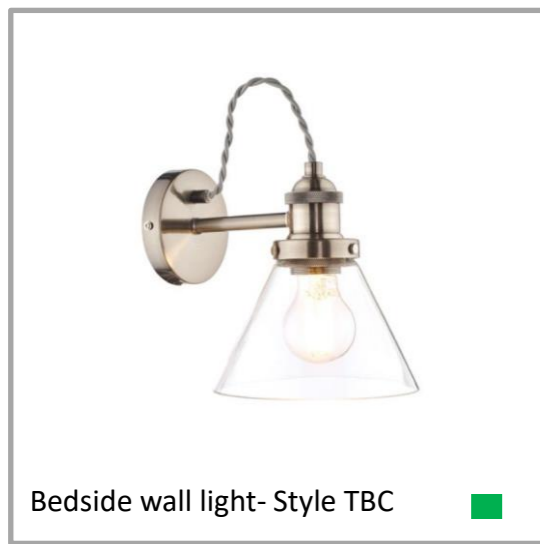
Floor lamp- Style TBC



Wall light- Style TBC



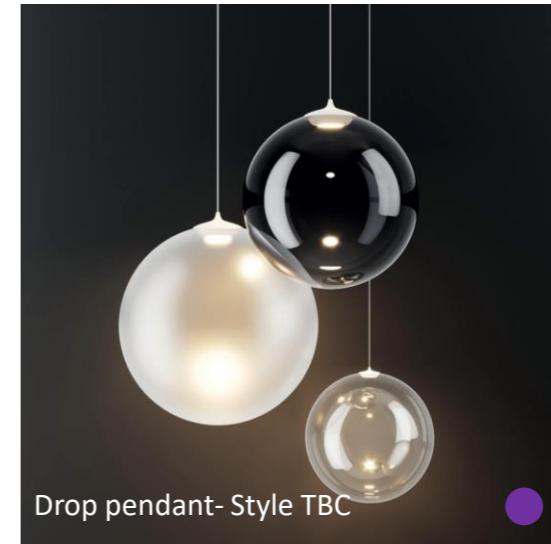
Bathroom pendant -Style TBC



Bedside wall light- Style TBC



Bathroom wall light- Style TBC

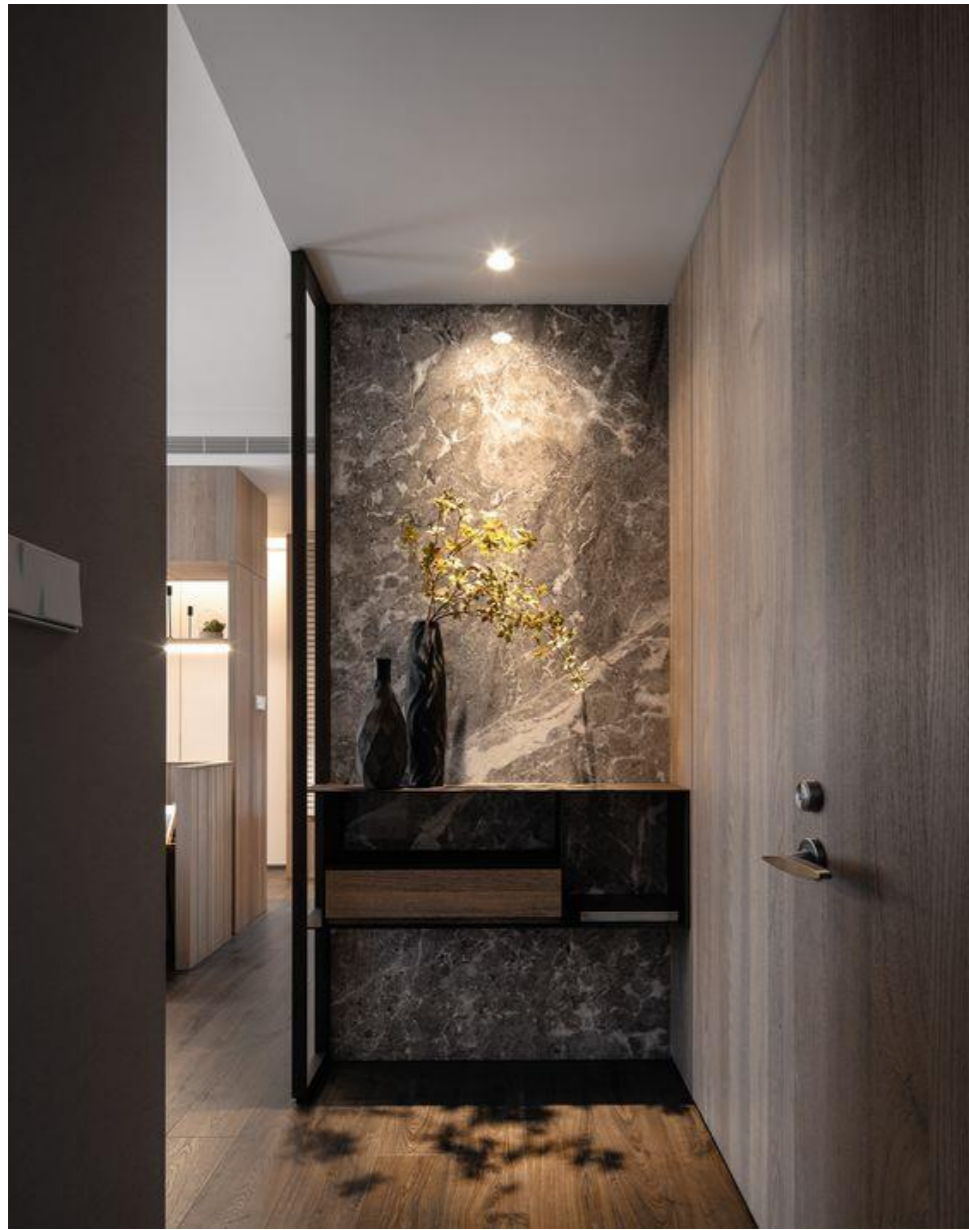


Drop pendant- Style TBC



Bedside pendant - Style TBC

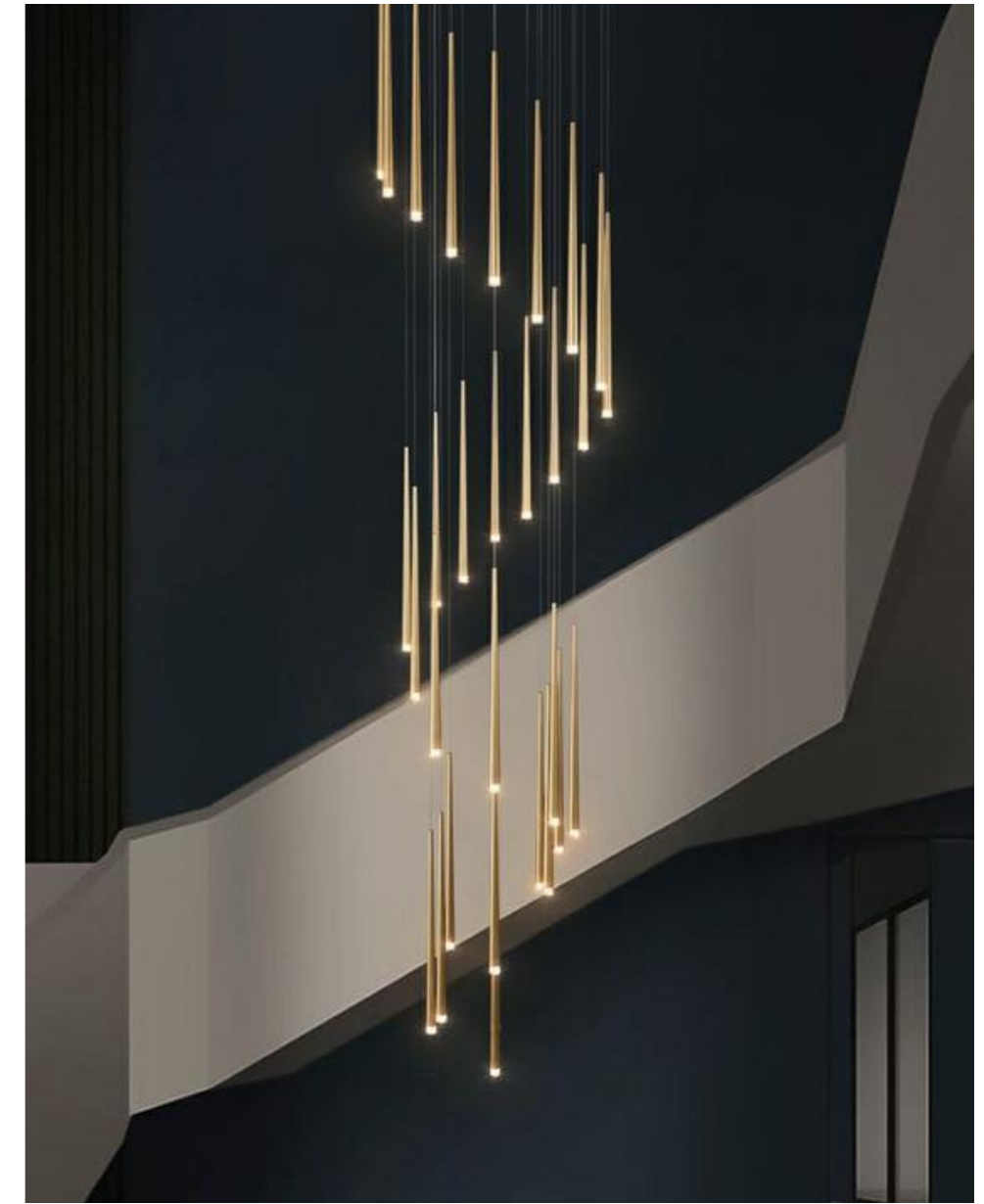




TASK LIGHTING



AMBIENT LIGHTING



FEATURE LIGHTING



THREE - BEARS GREEN

ENTRANCE HALL, STAIRS & LANDING
REFERENCE IMAGES

POTTERS
HOME
digital

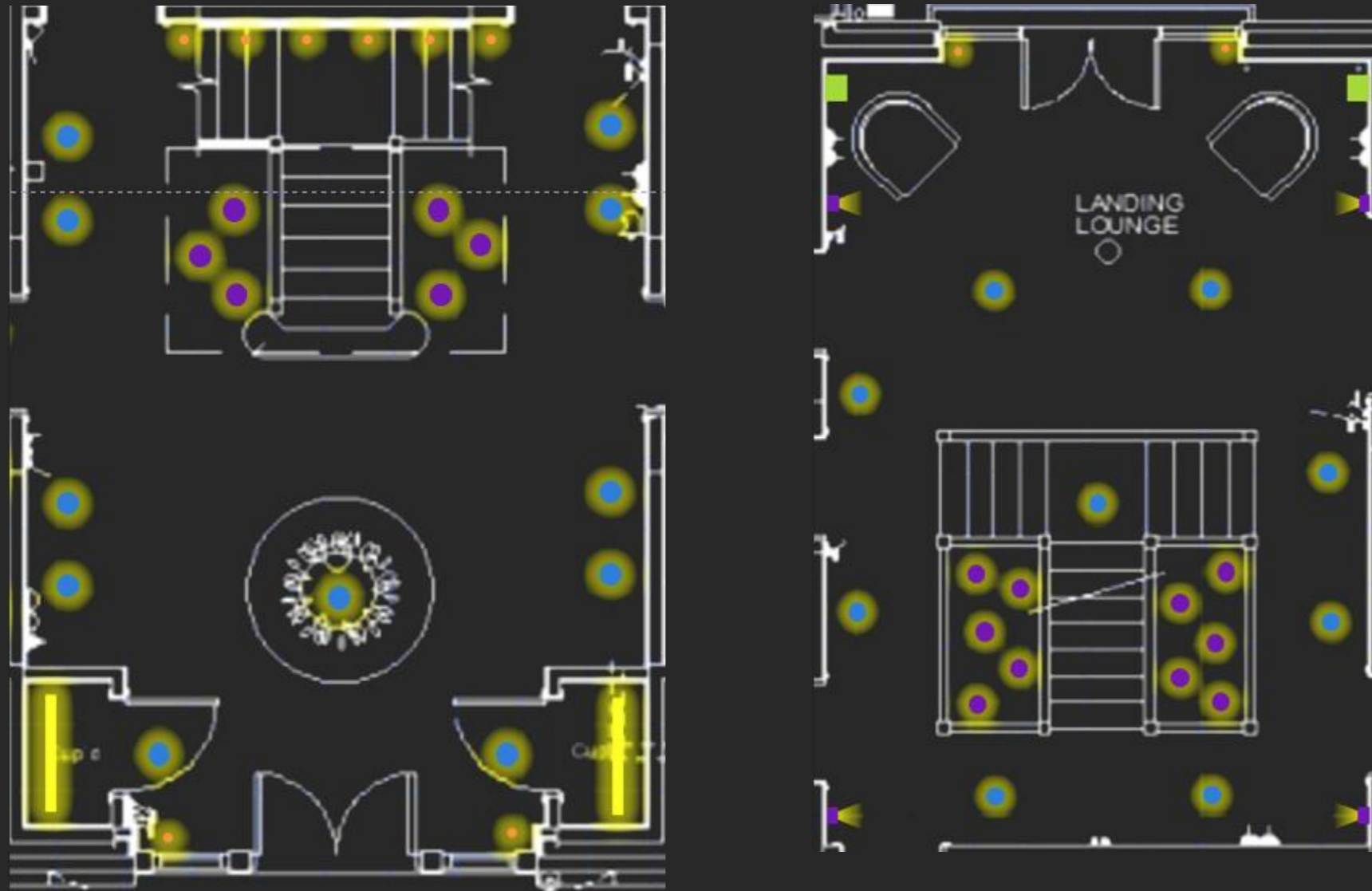
ENTRANCE HALL, STAIRS & LANDING

For the Staircase we propose miniature uplights to the wall beneath the open space, which will create an eye-catching feature, in conjunction with the multi-drop pendants coming down all the way from the first floor.

Downlights will brighten the walls and light artwork. A single downlight over the centre with a narrow spot optic will form an attractive pool on the table surface.

Downlights along the walls lead the way up the stairs, with uplights framing the window and a couple of low level marker light at each side for night lighting.

We also suggest the inclusion of 5 Amp sockets, for decorative floor or table lamps, to complete the overall scene.





THREE - BEARS GREEN

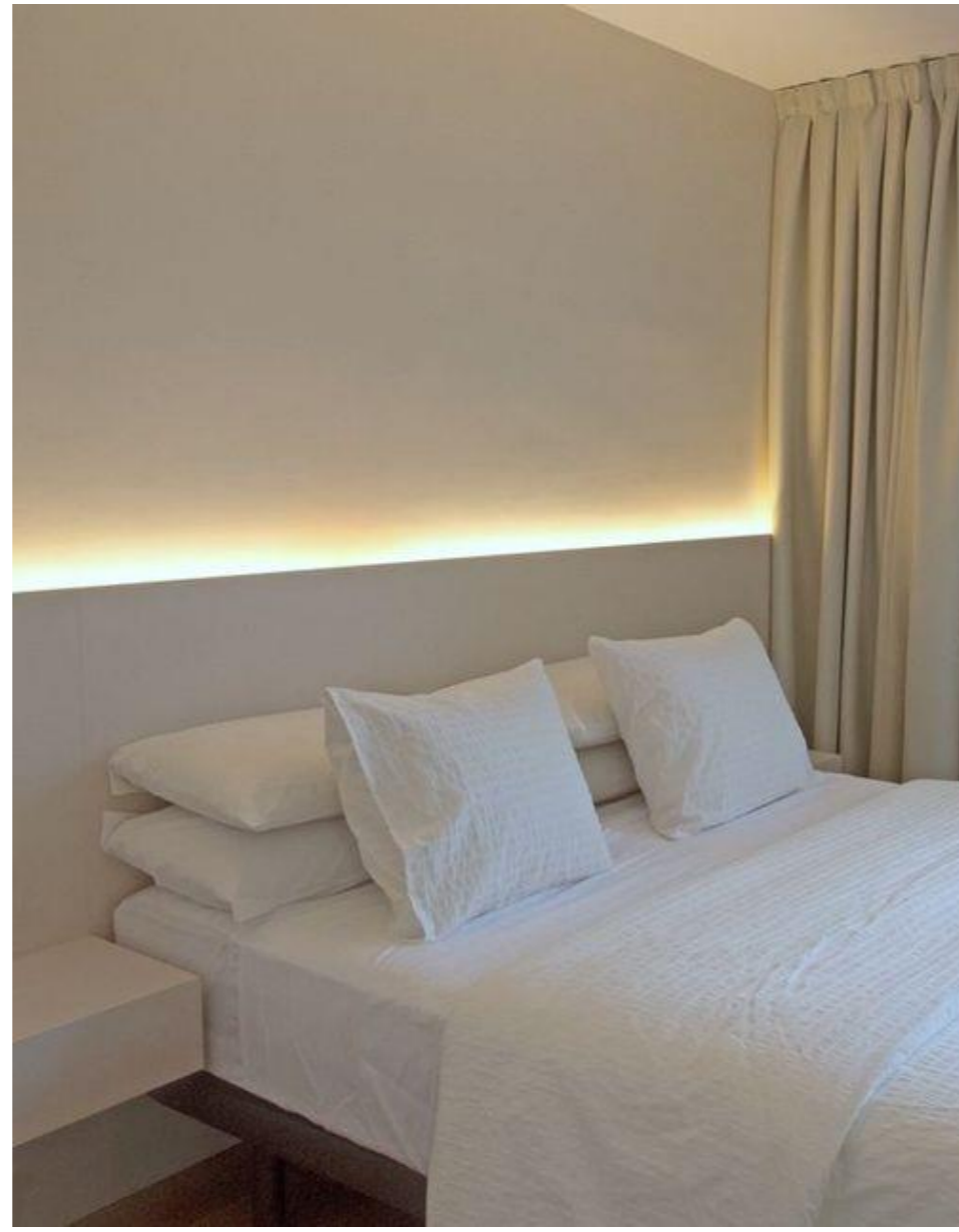
ENTRANCE HALL, STAIRS & LANDING
LIGHTING LAYOUT

POTTERS

HOME
digital



TASK LIGHTING



AMBIENT LIGHTING



FEATURE LIGHTING



THREE - BEARS GREEN

MASTER SUITE
REFERENCE IMAGES

POTTERS
HOME
digital



MASTER SUITE

On entering the Master Bedroom, we see an uplit half-wall to the rear of the bed head (Detail 9), pendants for bedside table lights, uplights to the door reveals and a pair of wall lights framing the door itself. In the dressing room we have wall lights for a dressing table, giving forward-facing light.

The main task lighting is provided by a recessed mini track system. This is a small slot in the ceiling which offers fully adjustable lighting. Linear LED will be included within the wardrobes. A pair of low-level marker lights in the wall light the way to the Bathroom.

The sloped wall onto the ceiling (Detail 10) will be uplit, with pendants over the bathtub and wall lights to the mirror. A niche within the shower completes the relaxing, bathtime scene, as well as acting as a night light.



THREE - BEARS GREEN

MASTER SUITE
LIGHTING LAYOUT

POTTERS

HOME
digital



THREE - BEARS GREEN

MASTER SUITE
LIGHTING LAYOUT

POTTERS

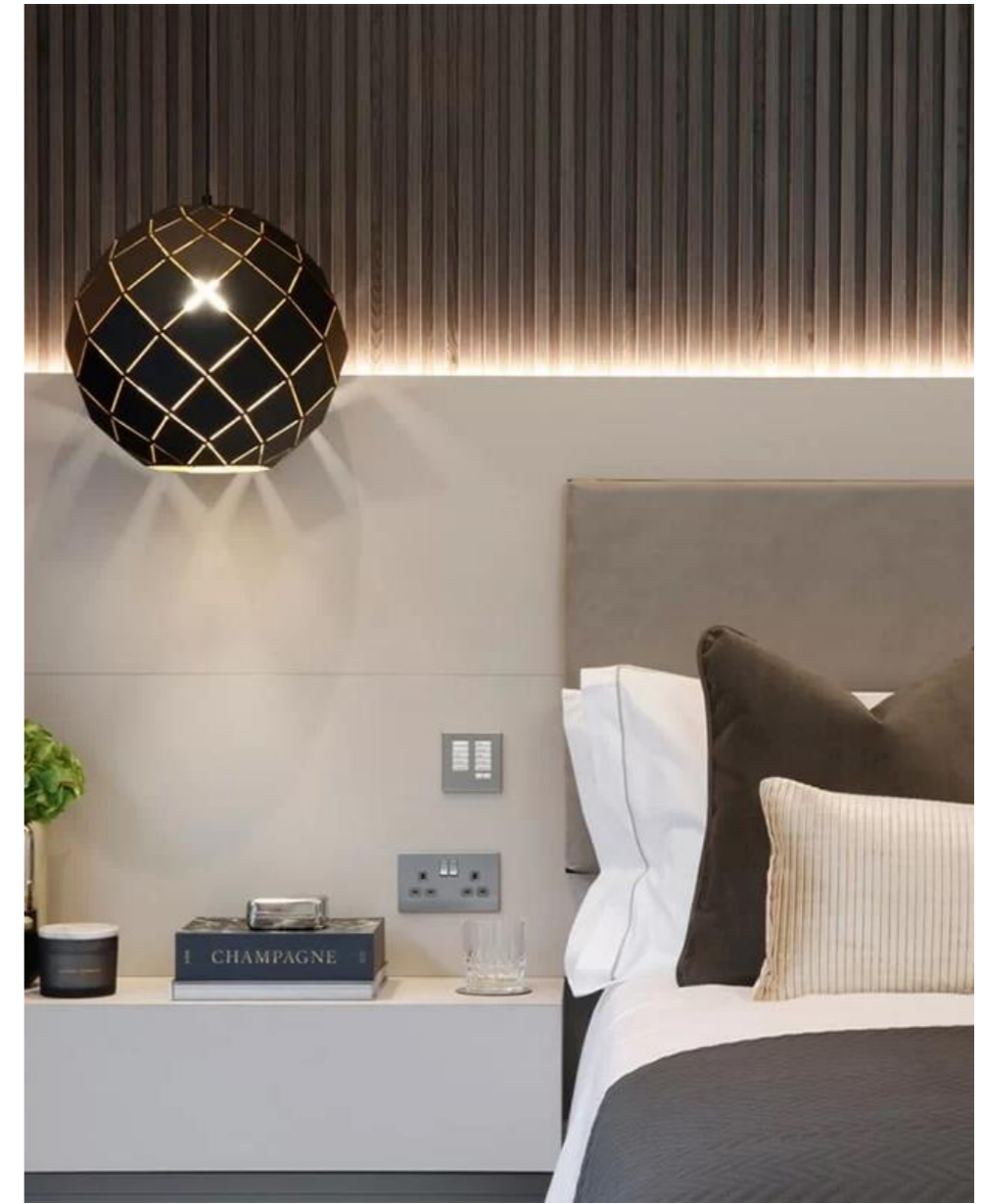
HOME
digital



TASK LIGHTING



AMBIENT LIGHTING



FEATURE LIGHTING





BEDROOM TWO

Bedroom Two mirrors the lighting in the Master Bedroom, with an illuminated bedhead wall, bedside pendants and wall lights.

The Bathroom has a pair of illuminated niches within the shower, two wall lights framing the mirror and downlights for general task lighting.



TASK LIGHTING



AMBIENT LIGHTING

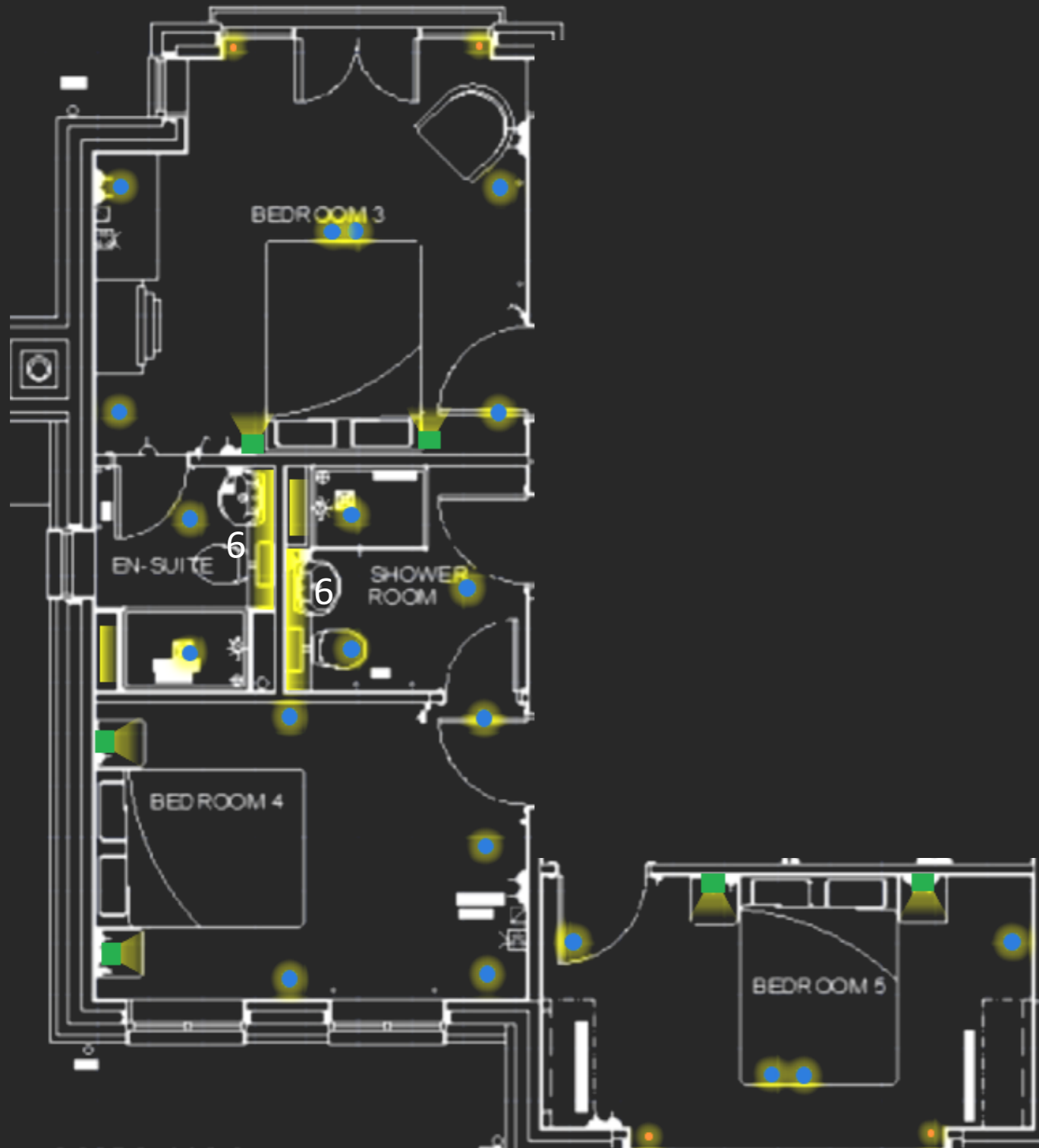


FEATURE LIGHTING



THREE - BEARS GREEN

BEDROOM THREE, FOUR & FIVE
REFERENCE IMAGES

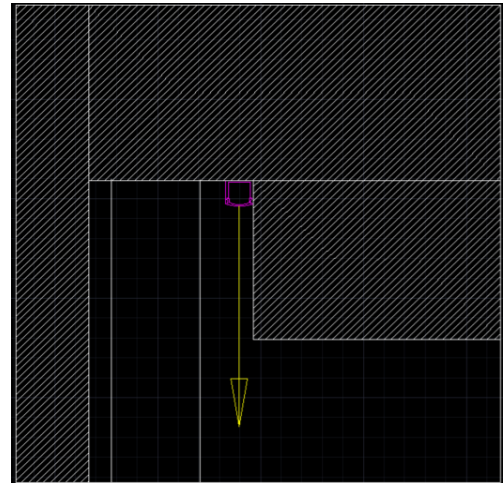


BEDROOM THREE, FOUR AND FIVE

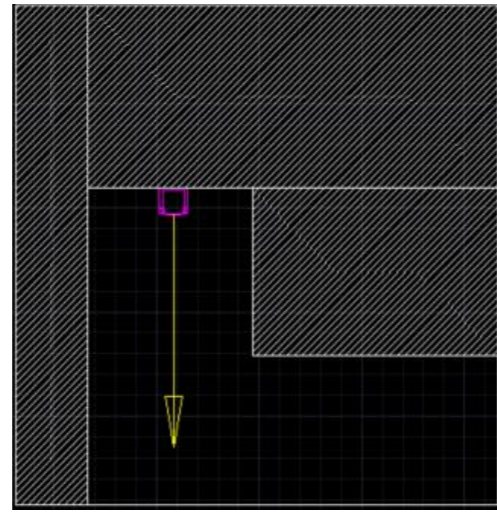
Bedrooms Three, Four and Five follow a similar concept to the other bedrooms, with bedside wall lights, downlights grazing the walls and uplights added to the window of Bedroom Five and the door of Bedroom Three.

Both bathrooms have a recessed linear LED mounted above the washbasin and WC (Detail 6), illuminated niches within the shower and downlights providing the general task lighting.

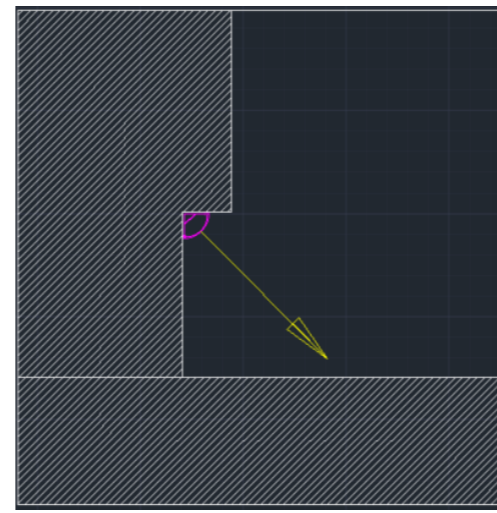
Detail 1



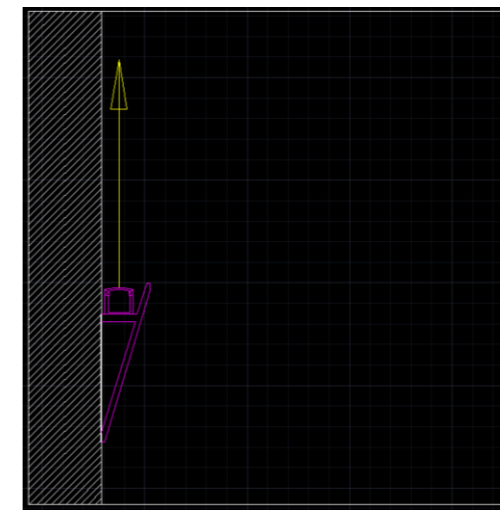
Detail 2



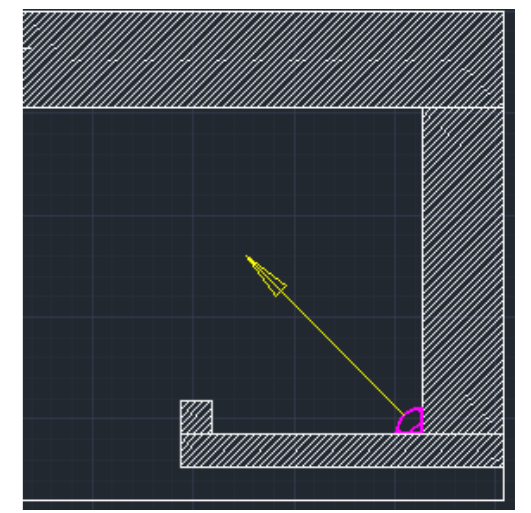
Detail 3



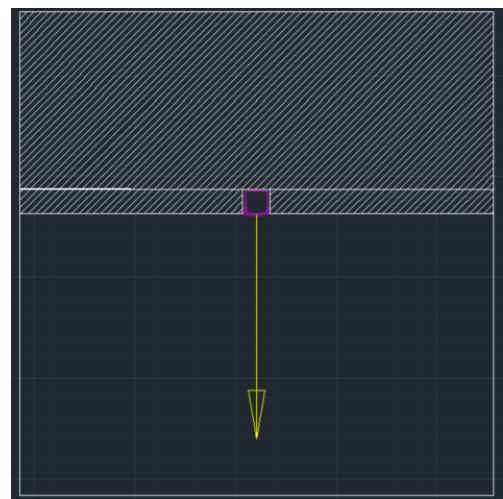
Detail 4



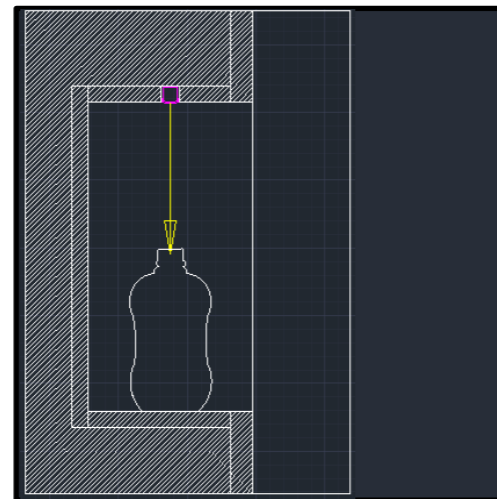
Detail 5



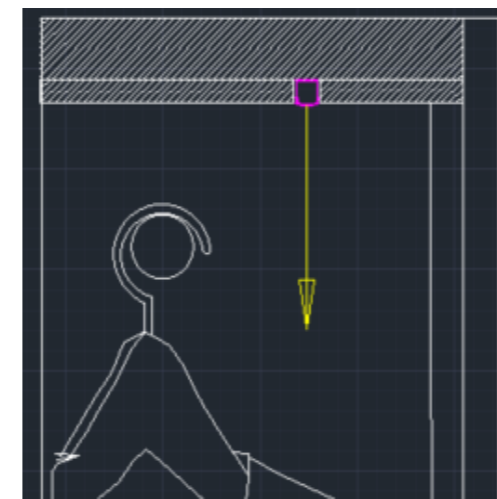
Detail 6



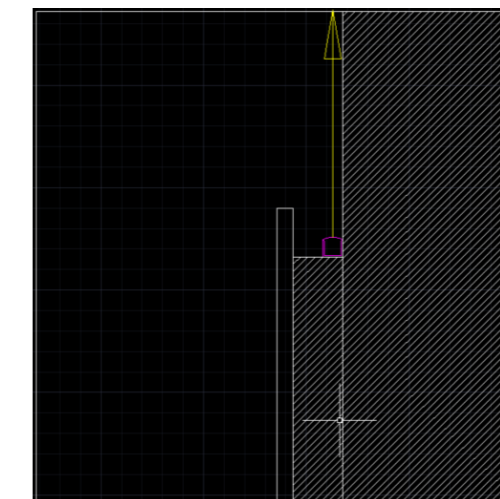
Detail 7



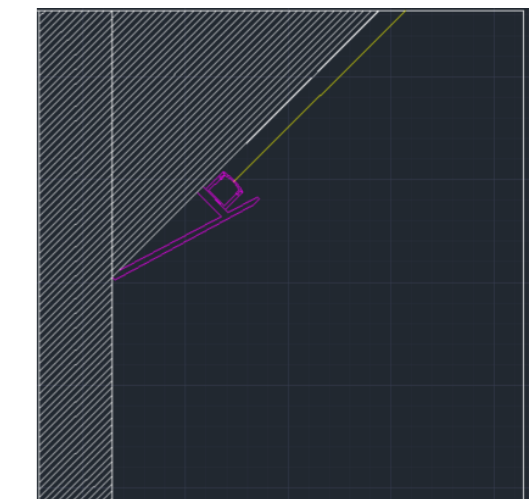
Detail 8



Detail 9



Detail 10



POTTERS HOME DIGITAL

7 East Cross

Tenterden

Kent

TN30 6AD

01580 762864

lighting@home-digital.com